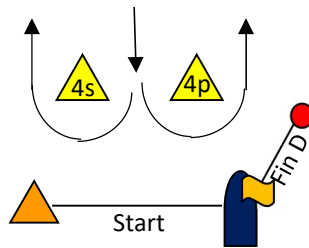
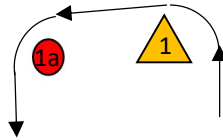


# Attachment A

## Course Chart (Windward/Leeward)



Course 4 = Start – 1 – 1a – 4s/4p – 1 – 1a – 4p – Fin D

### Notes:

- The 'Fin U' line may use the offset mark as the finish pin.
- The windward mark (1) will be an orange inflatable shape.
- The gate marks (4s/4p) will be yellow inflatable shapes.
- The windward offset mark (1a) will be an orange ball.
- The starting pin will be an orange tetrahedron.
- The finishing pin will be an orange or red ball.