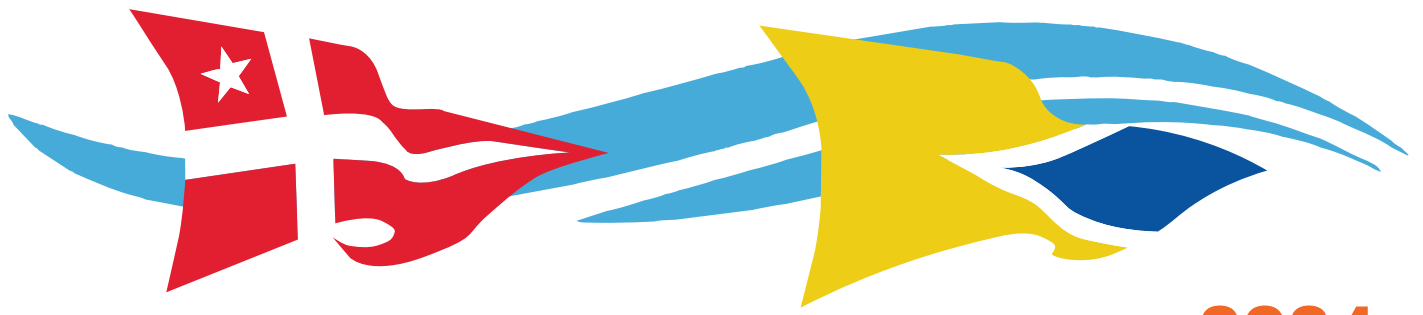


SB21KH



2024
SANTA BARBARA TO KING HARBOR RACE

The Chandlery

Est. 1946

YACHT SALES

Santa Barbara Harbor

MAKING DREAMS COME TRUE SINCE 1946



805-965-4538
www.Chandlery.com



Welcome racers, to the 51st running of the Santa Barbara to King Harbor Race!

The officers, directors, members, and staff of the Santa Barbara Yacht Club wish you all an enjoyable, safe, and memorable race at this time-honored tradition!

Race chairs this year are Rob Miller from Santa Barbara Yacht Club and Rose Vullo from King Harbor Yacht Club. Together they have worked hard preparing for this year's event. Each of the chairs has many volunteers contributing to provide a great experience for the participants. SBYC handles the pre-race prep, entries, merchandise sales, program development, Thursday BBQ party and the race start. KHYC handles the finish, welcome party, shrimp dinner, trophies and the awards ceremony. Both clubs manage docking accommodations before and after the race. Please join me in thanking our many volunteers for their hard work.

I would also like to thank the Santa Barbara Waterfront Department, Captain Nathan Alldredge, Jeanette Prusinski, Julio Gamino, and Aundre Guillen, for accommodating the race boats with dock assignments. As always, the professional staffs of the Santa Barbara Yacht Club and King Harbor Yacht Club deserve our appreciation for their hard work in making this a successful event.

Additionally, I would like to acknowledge our generous race sponsors this year. Their generous support helps make this event possible.

To the skippers and crews of this year's race, we extend a warm welcome to Santa Barbara Yacht Club. We will make every effort to ensure that your visit is pleasurable – from the BBQ and live music on Thursday event to the Friday morning breakfast and coffee.

Have a SAFE, fun and speedy race!

Dennis Boneck

2024 Commodore
Santa Barbara Yacht Club





City of Santa Barbara

Waterfront Department

SantaBarbaraCA.gov

July 8, 2024

Administration

Tel: (805) 564-5531

Fax: (805) 560-7580

Parking

Tel: (805) 897-1965

Fax: (805) 560-7580

Stearns Wharf

Tel: (805) 564-5518

Fax: (805) 963-1970

Harbor Patrol

Tel: (805) 564-5530

Fax: (805) 897-2588

Harbor Maintenance

Tel: (805) 564-5522

Fax: (805) 966-1431

132-A Harbor Way
Santa Barbara, CA
93109


Dear King Harbor Racers:

Welcome to Santa Barbara Harbor! While many of you have been here before, for some this may be your first visit. To accommodate you, we have enclosed a map of the Waterfront, including places to provision your boat, grab a meal, or buy a trinket to remember us by. In addition, we appreciate your attention to the following details during your visit to our harbor:

1. Santa Barbara Harbor's Clean Marina Program includes a required dye-tabling of your Marine Sanitation Device (MSD) upon arrival. Please check-in at the Accommodation Dock for a quick MSD check before receiving your slip assignment from the race committee (or from Harbor Patrol if you are an early arrival) and before going to your assigned slip.
2. Remember, free sewage and bilge-water pump-outs are available for your use.
3. The Harbormaster's Office (including Harbor Patrol) is located above West Marine. Look for the American flag.
4. If you want a keycard for access to marina facilities, you may purchase one at the Harbormaster's Office.
5. Slip rates for vessels under 65' are \$2.00 per foot per night; 65'-plus are \$3.50 per foot per night.
6. Alcohol use is confined to the marinas and is not allowed in public areas outside marina gates.
7. Please don't lay shore-power cords across marina walkways, on the dock, or overhead. Boats rafted together or assigned to walkways will not have shore-power access.
8. Questions? Call the Harbormaster's Office at (805) 564-5531, or hail Harbor Patrol on Channel 16 VHF (then switch to Channel 12).
9. If you experience facilities problems at your berth, Call the Harbormaster's Office at (805) 564-5531, or visit the office in person.

Thanks again for visiting our beautiful harbor. I wish you all a safe, speedy, and enjoyable trip to King Harbor.

Sincerely,


Nathan Alldredge
Harbor Operations Manager



Santa Barbara Yacht Club & King Harbor Yacht Club
51st Santa Barbara to King Harbor Race
 July 26-27, 2024



Schedule of Events

TUESDAY, JULY 23 - SBYC

1000-1600 SBYC RACE OFFICE OPEN (805) 965-8112

WEDNESDAY, JULY 24 - SBYC

1000-2200 SANTA BARBARA YACHT CLUB OPEN
 1000-1600 SBYC RACE OFFICE OPEN (805) 965-8112
 1130-1400 LUNCH MENU SERVED
 1645 FIRST START FOR SBYC WET WEDNESDAYS
 1800 SBYC WET WEDNESDAY BBQ & PARTY
**The SBYC Bar is always open once food is being served until the club is closed.*

THURSDAY, JULY 25 - SBYC

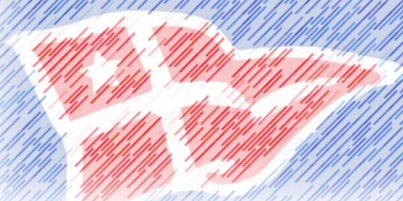
1000-2330 SANTA BARBARA YACHT CLUB OPEN
 1300-1800 REGISTRATION DESK OPEN
 1130-1430 LUNCH MENU SERVED
 1600 SBYC BEACH PARTY WITH LIVE MUSIC
 1700 **COMPETITOR BRIEFING & OPENING CEREMONY
 FOR THE 51ST SANTA BARBARA TO KING HARBOR
 RACE ON THE SBYC BEACH**
 1700-2000 SBYC BBQ

FRIDAY, JULY 26 - SBYC / KHYC

0730-2200 SANTA BARBARA YACHT CLUB OPEN
 0730-1000 BREAKFAST BUFFET
 0800-1000 REGISTRATION DESK OPEN
 1155 FIRST WARNING SIGNAL
 KING HARBOR YACHT CLUB OPEN ALL DAY WITH LIVE
 RACE TRACKING ON THE BIG SCREEN
 UPON ARRIVAL COMPLEMENTARY SNACKS
 UNTIL 0200AM KHYC BAR OPEN

SATURDAY, JULY 27 - KHYC

0700 KING HARBOR YACHT CLUB OPEN
 0700-1000 BLOODY MARY BAR
 0800-1400 KHYC BREAKFAST & LUNCH SERVED
 1400 MERCHANDISE SALES
 1500 AWARDS PARTY - APPETIZERS AND MUSIC
 1600 AWARDS PRESENTATION
 1730 SHRIMP FEED



51st Santa Barbara to King Harbor Race

July 26-27, 2024

Santa Barbara Facility Information

**All facilities are also shown on 'Attachment H – Santa Barbara Harbor Map'*

BOAT DELIVERY AND ARRIVAL

Santa Barbara slip reservation may be done through the online entry process available online at <https://sbyc.org/sb-kh/>. Dockage will be available for pre-registered boats at the fee of \$2.10 per foot per night for boats under 70 feet in length and \$3.60 per foot for boats 65 feet and longer. The boat arrival date and accurately calculated fees must be included with each entry. Unpaid entries will not receive dock space.

Santa Barbara - Upon arrival by sea to the Santa Barbara Harbor, each boat is asked to call the Santa Barbara Harbor Department on VHF Channel 12. The Harbor Department will ask boats to proceed to the Accommodation Dock at the west end of the harbor directly in front of the Harbor Department to receive a dye tab in their tank. Competitors may then radio the Santa Barbara docking committee on VHF Channel 78 to receive their slip assignment. In some circumstances due to the size of a boat, the harbor department may ask the vessel to go directly to their assigned slip over the radio. As a policy, the Harbor Department and docking committee do not release slip assignments in advance.

King Harbor - Upon finishing in Redondo Beach, yachts requiring guest moorage will be met by KHYC docking committee boats to be escorted to a mooring location. The docking committee will monitor Channel 78. Boats should be equipped and prepared to anchor if necessary.

MARINA GATE ENTRY

The Marina One entrance is located just a short jaunt down from SBYC as shown in 'Attachment H – Santa Barbara Harbor Map'. Marina gate cards can be purchased for \$10 each from the harbor department (located next to SBYC). If you have a marina gate card from prior visits, bring it with you as it can be reactivated at the harbor department office free of charge. The Marina One gate will be unlocked from noon on Thursday until noon on Friday.

YACHT CLUB FACILITIES

Yacht club facilities will be open to all competitors as stated on the 'Schedule of Events'. The Santa Barbara Yacht Club accepts credit card charges for visitors.

RESTROOMS / SHOWERS

The Marina restrooms are accessible with a marina gate card. The yacht club restrooms are available during regular operating hours or with a SBYC parking lot gate card after hours. Public restrooms are also available adjacent to the harbor public parking lot. Most restroom facilities have showers.

ICE & SUPPLIES

There is a Harbor Market located adjacent to SBYC with ice and other supplies available for purchase. There will be ice available for competitor boats on the day of the race in the parking lot of SBYC.

VEHICLE PARKING FOR BOAT OWNERS, CREW, AND SPECTATORS

SBYC parking lot is reserved for member only parking. Boats arriving in Santa Barbara by trailer and hoisting into the water may be permitted in the SBYC parking lot for a short period of time to prepare the boat to launch. Call the front desk at (805) 965-8112 for entry into the lot in this special circumstance.

For crew, spectators, and other guests, there is a public parking lot on the north side of the harbor as shown in 'Attachment H – Santa Barbara Harbor Map'. All day parking costs \$20 per vehicle (fractional costs for less time stayed). Trailer parking costs \$10 per day. For those who are willing to walk a little further, there is limited free parking in the Pershing Park parking lot (on the west side of Castillo Street, just north of the Pershing Park baseball diamonds).

LAUNCHING – HOIST OUT

For boats under the weight capacity of one ton, you may hoist in or out of the water via the SBYC hoist. The SBYC hoist is located on the pier closest to the yacht club (gray in color). The hoist key is available at the front desk of SBYC.

The 4-ton city hoist is beige in color and located at the end of the long pier next to the SBYC hoist and runs on quarters. However, it is a very long pier to back down and you are likely to encounter considerable commercial traffic and tourism.

For boats above the hoists' capacities, Harbor Marine Works is the only local boatyard capable of launching. You can find more information at <http://www.sbboatyard.com>. The next closest launch site is Ventura Harbor Boatyard – <http://www.vhby.com>.

You may also ramp launch your boat at the public launch ramp. All launching options are shown in 'Attachment H – SB Harbor Map'.

TRAILER STORAGE

There may be limited trailer storage in the SBYC parking lot depending on the date of request. Please email the SBYC Race Director, Brad Schaupter at racing@sbyc.org to arrange for a parking spot and entrance into the lot. Trailers that need to stay for more than 24 hours may need to stay in the SB Harbor public parking lot.

ON SHORE REGATTA HEADQUARTERS

On Shore Regatta Headquarters will be located at SBYC fleet room (downstairs).

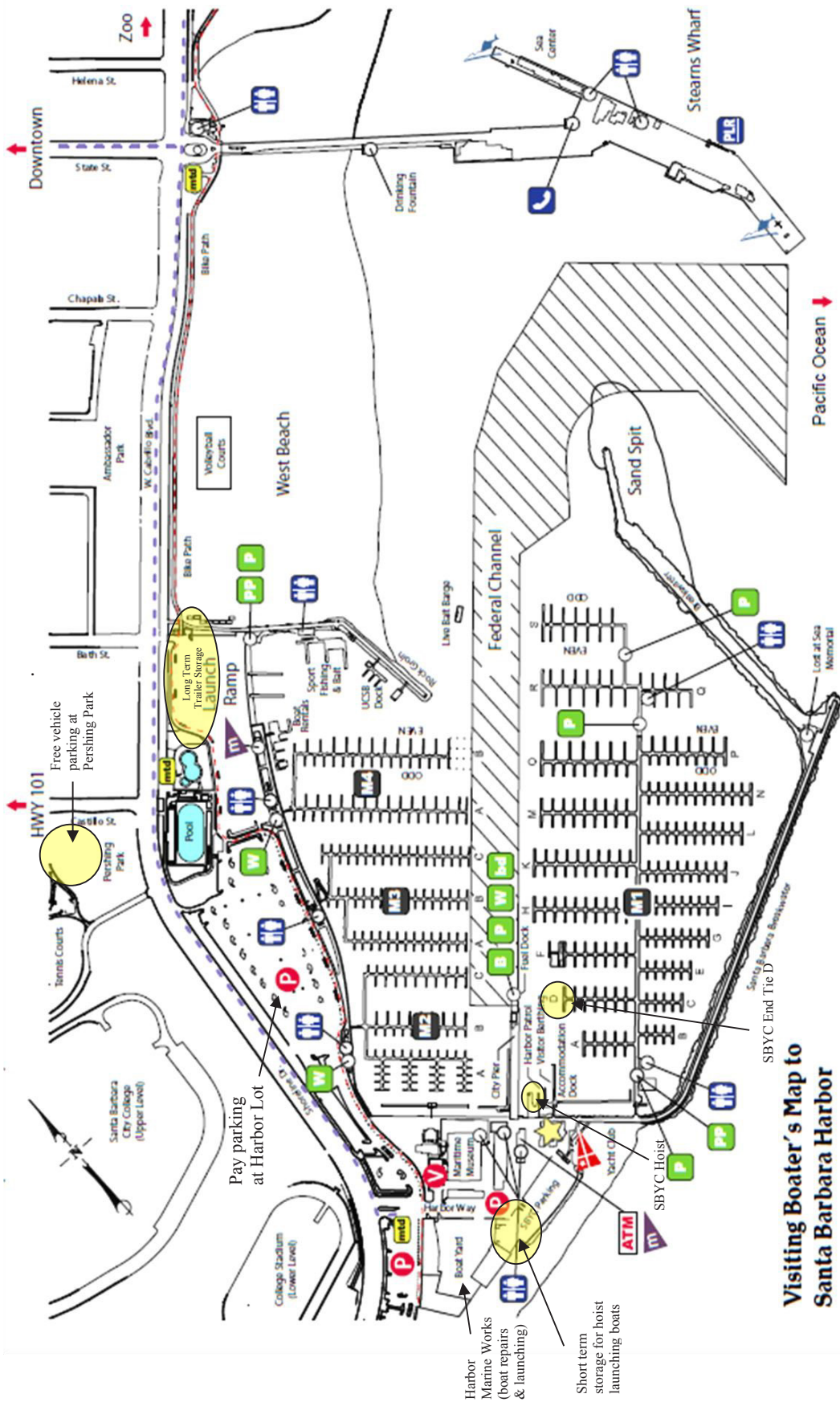
RIGGING / SAIL REPAIRS / BOTTOM CLEANING

Harbor Marine Works is located adjacent to the SBYC parking lot. Scrub a Dub Dive Service is available for bottom service (scrubadubdive@gmail.com).

LODGING

There are several hotels on Cabrillo Boulevard within walking distance of the regatta site. Other more affordable options are also available in Carpinteria, Santa Barbara, or Goleta within a 15 minute drive. Visit: <http://www.santabarbaraca.com/hotels-and-hideaways/> for a list of area hotels. Camping is prohibited in the Santa Barbara Harbor parking area. Please visit: <http://www.santabarbara.com/activities/camping/> for a complete list of nearby campsites.

'Attachment H – SB Harbor Map'



Visiting Boater's Map to Santa Barbara Harbor

	Harbormaster		Marina Area		Fish Station		Yacht Club		Bike Path
	Parking		ADA Restrooms		Porta Potty		Mini-mart		Bus Shuttle Stop
	Valet Parking		Telephone		Pumpout		Battery Disposal		Bus Shuttle Route
	Automatic Teller		Loading Ramp		Blige Station		Waste Oil Station		Public Pool

City of Santa Barbara | Waterfront Department
 132-A Harbor Way, Santa Barbara CA 93109
 Harbormaster's Office: (805) 564-5530
 Map last updated: 04/21/2010

51st Santa Barbara to King Harbor Race

July 26-27, 2024

SAILING INSTRUCTIONS

The Organizing Authorities for the 2024 Santa Barbara to King Harbor Race will be:
The Santa Barbara Yacht Club (SBYC), 130 Harbor Way, Santa Barbara, CA 93109 &
The King Harbor Yacht Club (KHYC), 280 Yacht Club Way, Redondo Beach, CA 90277

The notation [NP] in a *rule* means that a boat may not protest another boat for breaking that *rule*. This changes RRS 60.1(a).

The notation [DP] in a *rule* means that the penalty for a breach of a *rule* may, at the discretion of the protest committee, be less than disqualification.

The notation [SP] in a *rule* means that a standard penalty may be applied by the race committee without a hearing.

1. RULES

- 1.1 The event will be governed by the rules as defined in *The Racing Rules of Sailing (RRS)*.
- 1.2 Membership with a valid rating certificate is required for the appropriate class association.
 - 1.2.1 PHRF of Southern California (PHRF) is the Rating Authority (RA) for monohulls. Valid and current Southern Californian PHRF certificate in the online PHRF database (www.phrfsocal.org) shall constitute proof of membership (except as noted in Sailing Instruction 1.3).
 - 1.2.3 Ocean Racing Catamaran Association (ORCA) is the Rating Authority (RA) for multihulls. Inclusion on the current ORCA rating list shall constitute proof of ORCA membership.
 - 1.2.4 Offshore Racing Rule (ORR) is the rating authority for those boats that opt to be scored additionally under ORR. Inclusion on the current ORR or ORR-EZ list shall constitute proof of ORR membership (https://regattaman.com/certificate_page.php).
- 1.3 Boats competing in a properly entered One-Design class (including those competing under an alternative rating rule) need not provide PHRF rating certificates. However, boats without certificates will not be eligible for the overall competition.
- 1.4 Cruising Class boats may apply a non-spinnaker offset to their PHRF rating if they will not use free-flying headsails.
- 1.5 Cruising Class boats may use their motors within the rules set forth in "Attachment B - Cruising Class Motoring Rules and Log".
- 1.6 The term Skipper as used herein is defined as the person who is designated on the entry form, and for the purpose of RRS 46, is the person in charge as it relates to the Racing Rules of Sailing (RRS) or any matters related to the Santa Barbara to King Harbor Race. The Skipper is responsible for compliance with the rules, the boat, its handling, safety, and the conduct of its crew before, during, and after the race.
- 1.7 In the case of a conflict, these Sailing Instructions will take precedence over the Notice of Race.

2. ALTERATIONS TO THE RULES

- 2.1 [DP] RRS 51, Movable Ballast is changed to allow the movement of sails that are not set, however all sails not being flown must remain within a yacht's lifelines. This changes RRS 51 only as to the movement of sails.
- 2.2 [DP] Autopilots and steering vanes shall not be used by boats racing except that Doublehanded boats may engage automatic steering system during sail changes only. This changes RRS 52.

- 2.3 [DP] Rule 51, Movable Ballast, and Rule 52 Manual Power are changed to allow the positioning of movable ballast by power on boats as designed and as rated by the RA. All movable ballast systems shall be capable of manual operation if powered systems are inoperable.
- 2.4 [DP] RRS 64.2 Penalties is changed as follows: Add: (c) For other than Part 2 infractions, the Protest Committee may penalize a boat by adding additional time to her corrected time.
- 2.5 OCS EXPERIMENTAL RULE DR 21-01 will apply.
Under World Sailing Test Rule DR21-01, change the definition *Start* as follows:
Start A boat starts when her hull having been entirely on the pre-start side of the starting line, and having complied with rule 30.1 if it applies, any part of her hull crosses the starting line from the pre-start side to the course side either
(a) at or after her starting signal, or
(b) during the last 10 seconds before her starting signal.
When a boat starts in accordance with item (b) of the definition *Start*, she may return to the pre-start side of the line to comply with item (a) of the definition of *Start*, but, if she does not the starting penalty shall be: 15 minutes added to her elapsed time.
- 2.6 The U.S. Sailing prescriptions to rules 63.2 will not apply.
- 3. SAFETY REQUIREMENTS**
- 3.1 [DP] Boats shall comply with the current United States Coast Guard Regulations and the offshore safety regulations of the fleet in which they are competing.
- 3.2 [DP] Boats shall comply with the US Safety Equipment Requirements, (USSER) except as modified by the notice of race and these sailing instructions. The course is classified as a Coastal Race. The equipment requirements are available at: <https://www.ussailing.org/competition/offshore/safety-information/ser-world-sailing-special-regulations/>. The US Safety Equipment Requirements (USSER) are changed for the following sections:
- 3.2.1 USSER 2.4.4 is amended to add the sentence: Lifelines may be the same as those supplied as original equipment.
- 3.2.2 Add to USSER 2.4.8: Boats originally manufactured without toe rails shall have crew secured to jack lines when on the foredeck.
- 3.2.3 USSER 2.5.1, 3.8.1, and 3.33.1 are recommendations for the race.
- 3.2.4 USSER 3.1.2 requirement for crotch or leg straps to be attached to Personal Flotation Devices will be waived.
- 3.2.5 USSER 4.3.2. requirement of: *“At least 30% of those aboard the boat, but not fewer than two members of the crew, unless racing single-handed, including the person in charge, shall have a valid Coastal, Offshore, or International Offshore Certificate from US Sailing, or the equivalent from another national authority”*, is waived for the Santa Barbara to King Harbor Race. The Organizing Authority strongly recommends that person(s) in charge and others take the opportunity to attend upcoming seminar(s), including, when available, the ‘On-Line’ version to obtain these certificates.
- 3.3 [DP] Rules Part 2, “When Boats Meet” is replaced between the hours of local sunset and local sunrise by Part B—Steering and Sailing Rules, of the International Regulations for Preventing Collisions at Sea (IRPCAS). Competitors are also reminded that under the preamble of Part 2 of the Racing Rules of Sailing, boats racing must comply with the International Regulations for Preventing Collisions at Sea (IRPCAS) when they meet other marine traffic.
- 3.4 [DP] An operating VHF radio with at least channels 12, 16, 22, 68, 71 and 78 is required.
- 3.5 The minimum crew regulations are as stated in the bylaws for the appropriate class.
- 3.6 [DP] All boats shall fly a radar reflector at spreader height or higher for the duration of the race.
- 3.7 [NP] [DP] All boats should monitor VHF Channel 16 after their start for the duration of the race. Competitors must obey directions given to them by any naval vessels on VHF Channel 16.
- 3.8 The Santa Barbara to King Harbor Race crosses a Traffic Separation Scheme. The race committee would like to call special attention to the RRS Preamble to Part 2 and RRS 56.2 as changed herein. The

IRPCAS rule 10 referenced in RRS 56.2 can be found at: (see page 22-24)
<https://www.navcen.uscg.gov/pdf/navrules/navrules.pdf>.

4. COMMUNICATIONS WITH COMPETITORS

- 4.1 Notices to competitors and amendments to these Sailing Instructions will be posted on the official online notice board located at <https://sbyc.org/sb-kh>.
- 4.2 The SBYC race office is located at the Santa Barbara Yacht Club - 130 Harbor Way, Santa Barbara, CA 93109, on the southwest corner of the building.
Telephone – (805) 965-8112, ext 114. Email – racing@sbyc.org.
- 4.3 The KHYC race office is located at the King Harbor Yacht Club – 280 Yacht Club Way, Redondo Beach, CA 90277. KHYC finish line may be contacted on VHF Channel 78 or by contacting Dorian Harris at (310) 259-1040 / dorian.harris628@gmail.com
- 4.4 [DP] During the starting sequence, the race committee intends to monitor and communicate with competitors on VHF radio channel 71. The Race Committee start boat will make broadcasts on Channel 71 that will contain information on class starts, time countdown, on course side boats, and announcements dictated by special circumstances regarding the race. Channel 71 should not be used for hailing by race participants between 1130 and 1230 hours during starting procedures. Failure of any radio announcement shall not constitute grounds for redress. After the starting sequence and while racing, competitors should monitor VHF Channel 16. At the finish line, the Race Committee will monitor VHF Channel 78.

VHF Channels:

- Check in boat – VHF Channel 78
- Before and during start – VHF Channel 71
- After start and while racing on the course – VHF Channel 16
- At the finish line – VHF Channel 78

5. CHANGES TO SAILING INSTRUCTIONS

Changes to the Sailing Instructions will be posted before 0900 hours, July 26, 2024.

6. SIGNALS MADE ASHORE

Signals made ashore will be displayed on the SBYC flagpole.

7. YB TRACKERS

- 7.1 [DP] [NP] Each boat shall carry a YB Tracker (active position transponder) as supplied by the Organizing Authority. The YB Tracker shall be ON and functioning from Friday, July 26, 2024 at 1000 until the boat has docked after finishing.
- 7.2 YB Trackers will be available at the Skipper Packet pickup times and locations.
- 7.3 [DP] [NP] YB signal tracking will be turned off at 1600 on Saturday, July 27, 2024.
- 7.4 [DP] [NP] Boats are responsible for returning the YB Tracker in working order. Broken or lost transponders may be subject to replacement and/or damage charge of \$800.00 USD.
- 7.5 [DP] [NP] Turn in your YB Tracker at the race desk at King Harbor Yacht Club or by mailing it to:
King Harbor Yacht Club
C/O Rosie Vullo
280 Yacht Club Way
Redondo Beach, CA 90277
- 7.6 [DP] [NP] YB Trackers must be returned by Thursday, August 1, 2024.

8. RACE BURGEE

[DP] The Race Burgee shall be displayed from the starboard main shroud or halyard at spreader height for the duration of the race.

9. CHECK-IN

[NP][DP] Prior to the first warning signal, all racing boats shall identify themselves to the check-in vessel on station near the entrance to the Santa Barbara Harbor by clearly displaying their sail number and the number of souls on board. Each boat is responsible for ensuring that the check-in vessel verbally acknowledges her proper sail number and the number of people on board. For boats too large to come within range of the check-in vessel, they may radio the check-in vessel on VHF channel 78.

10. CLASS DIVISIONS AND FLAGS

Class breaks, starting assignments, and class flags will be as described in 'Attachment A – Start Schedule' and will be posted on the Notice Board and included in each boat's race packet.

11. SCHEDULE OF RACES

11.1 'Attachment A - Start Schedule' displays the starting schedule for the race and the order of starts. This attachment will be included in each boat's race packet.

11.2 The scheduled time of the warning signal for the first start is 1155.

12. THE COURSE AND MARKS – See Attachment C and D

12.1 The course will be:

- Start per SI 13
- Anacapa Island to port
- Finish between waypoint for Redondo King Harbor Bell Buoy (RW "RB" Mo (A) BELL) to port and waypoint for Redondo Pier to starboard

12.2 The marks will be:

Mark	Mark Description
Start SB	The starting lines will be located approximately .85 nautical miles SSW of the Santa Barbara Harbor entrance in the vicinity of N34° 23.739 / W119° 41.678. The starting line is described in further detail in SI 13. See Attachment C – Start Detail
Anacapa	Anacapa Island to port
Finish KH	Waypoints at N33° 50.356 / W118° 23.788 to port = Redondo King Harbor Bell Buoy (RW "RB" Mo (A) BELL) in vicinity and at N33° 50.342 / W118° 23.687 to starboard = Redondo Pier South corner in vicinity (approximately 700 feet from Redondo pier South corner). See Attachment D – Finish Detail
	<ul style="list-style-type: none"> • Note: Redondo King Harbor Bell Buoy (RW "RB" Mo (A) BELL) is a red bell buoy in the vicinity of the listed waypoint and is subject to natural influences. The buoy is listed for visual reference only and is NOT a mark of the course. • Note: The southern corner of Redondo Pier is a visual reference and NOT a mark of the course.

12.2 The approximate bearing to the first mark is 140 degrees.

12.3 The rated distance of the race is 79.69 nautical miles. This changes the NOR.

13. THE START

- 13.1 Races will be started by using rule 26 with the warning signal made five (5) minutes before the starting signal.
- 13.2 Starting times are listed in 'Attachment A - Start Schedule'. The start signal of one class will be the warning signal for the next in each sequence.
- 13.3 [NP][DP] There will be two separate lines defined by inflatable tetrahedrons at each end. Colors for each line will be described in 'Attachment A - Start Schedule'. In each case, the mark nearest the Race Committee Vessel will be separated from that vessel by approximately 50 feet. The area between the inboard marks, including the Race Committee Vessel, shall rank as an OBSTRUCTION. Vessels entering this area may be subject to protest by the RC.
- 13.4 The Starting Lines will be located approximately .85 nautical miles SSW of the Santa Barbara Harbor entrance between the designated inflatable racing buoys. Two classes will start simultaneously. The designated line and starting time for each class appears in the 'Attachment A - Start Schedule' Sheet.
- 13.5 [NP][DP] Boats shall keep at least 50 yards clear of the starting area until after the starting signal of the class preceding her own.

14. ON COURSE SIDE

- 14.1 As a courtesy, the Race Committee will attempt to notify recalled boats by hailing their sail number over VHF channel 71. Failure of a boat to see or hear her recall notification shall not be grounds for redress. A boat's position in the sequence of hailed numbers or broadcast numbers shall not be grounds for redress.
- 14.2 [NP][SP] OCS EXPERIMENTAL RULE DR 21-01 will apply. See SI 2.5.

15. GENERAL RECALL

Classes recalled in a General Recall will start at the next starting interval after the last scheduled (or previously recalled) class on the originally assigned line. This modifies RRS 29.2.

16. ASSISTING BOATS IN DISTRESS

The Protest Committee will consider an appropriate time allowance for time lost while aiding a vessel in distress only if redress is requested as described in Rule 62.

17. THE FINISH

- 17.1 [NP][DP] A boat's YB Tracker will automatically transmit a latitude/longitude and PST time when it crosses the finish line. This data will be used to determine a boat's finish time.
- 17.2 Boats are required to document the time they pass through the finish per SI 18.

18. DOCUMENTATION

- 18.1 Boats are required to legibly document their finish time/position with a photo or screen shot of their navigation equipment showing Pacific Daylight Time (from GPS), and simultaneously the lat/lon of their boat at that point. This image shall be emailed to jerryvellutini@gmail.com and racing@sbyc.org as soon as possible, but no later than two (2) hours after finishing. Please be sure to include the Boat Name in the subject line of your email. Send your reported finish time in the body of the email. Please turn flash off and review your pictures to ensure the data is legible.
- 18.2 If 2 hours after finishing, email or text is still unavailable, please either stop by the KHYC Sailing Office in person or call the KHYC Finish Line at (310) 259-1040 and leave a voicemail with the following information: caller name and phone number, boat name, sail number, finish time. Remember to speak slowly and clearly and repeat your contact number. Boats failing to supply finishing times will be given interpolated times from the tracker or may not be scored. Dropped calls, poor connections, or wrong numbers may affect your finish time.
- 18.3 In the event of a significant discrepancy between a boat's reported finish time compared with that reported by the YB Tracker, a competitor may file a scoring inquiry. It will be up to the discretion of the RC in conjunction with the Protest Committee (PC) to determine the finish time to be used. Evidence

may be requested, which may include but is not limited to: A boat's navigation software log file, testimony or evidence from other boats, race tracker, AIS logs, etc.

19. TIME LIMIT

[NP][DP] Boats failing to finish by 1600 hours, Saturday July 27, 2024 will be scored Did Not Finish (DNF). This changes rule 35. **It is essential that each boat notify the Race Committee at her earliest opportunity if she retires from the race or is still at sea at 1600 hours Saturday.** Failure to do this may result in the rejection of future entries in this event. Notification may be made by any of the following methods:

- Hail the Race Committee on station at the finish line.
- Contact KHYC by VHF Ch. 78 or cell phone (310) 259-1040.

20. PENALTY SYSTEM

[DP] Boats protested and found by the Protest Committee following a hearing to have broken a rule for equipment or safety violation under US Safety Equipment Regulations (USSER) or US Coast Guard (USCG) requirements, shall be penalized. The Protest Committee will apply a minimum of ten (10) minutes added to the boat's recorded elapsed time, up to a maximum of disqualification (DSQ) for each found violation. This changes rule 64.2.

21. HEARING REQUESTS

- 21.1 Protest and requests for redress must be filed at the KHYC message center desk within two hours after finishing. Protest hearings will begin on Saturday at 1000 hours in approximately the order received. Changes in this procedure will be posted on the KHYC bulletin board.
- 21.2 Yachts intending to file a protest or request redress shall notify the finishing boat upon finishing either on VHF channel 78 or hailing. Failure to do so may result in the denial of a protest or redress hearing.
- 21.3 Protest forms are available downstairs at the KHYC Regatta bulletin board.

22. TROPHIES

Trophies will be awarded to the top finisher(s) in each class based on participation. The trophy presentation will take place at the King Harbor Yacht Club at 1600 on Saturday, July 27, 2024.

23. ADDITIONAL INSTRUCTIONS FOR CRUISING CLASS

Paragraphs 25 through 31 apply only to Cruising Class boats.

24. CRUISING CLASS RATING

A Cruising Class Boat's Race Rating for this race shall be their base OWC rating less any non-spinnaker offset adjustments that may apply.

25. CRUISING CLASS ENGINE USE

- 25.1 An engine may be used for charging batteries, pumping bilges or supplying power for weighing anchor or refrigeration while in neutral. In addition, Cruising Class participants may use an engine for propulsion within the limitations stated below.
- 25.2 A vessel's speed in knots may not exceed its hull speed while the engine is in-gear propelling the boat. Hull speed is defined as $1.34 \times \text{Square Root (LWL)}$, where 'LWL' is the length of the waterline in feet.
- 25.3 A vessel's engine may not be put in-gear within thirty (30) minutes after that vessel's start time.

26. RECORDING REQUIREMENTS

- 26.1 The skipper shall record on the Cruising Class Engine Log (as shown on Attachment B) both the GPS Latitude and Longitude position of the boat (to the second decimal place of a minute) and the GPS time (to nearest second) on each occasion when the engine was put in-gear and was taken out of gear.
- 26.2 **A minimum of 30 minutes shall be recorded each time the engine is put in-gear.**
- 26.3 Record the total engine in-gear propulsion time in **MINUTES**.

27. FILING THE SANTA BARBARA TO KING HARBOR CRUISING CLASS ENGINE LOG

- 27.1 All Cruising Class participants that finish shall file a Cruising Class Engine Log, as shown in Attachment B of these Sailing Instructions, **even if the engine is not used**. The Cruising Class Engine Log will be included in the Skipper's Packet. The Cruising Class Engine Log must be submitted to the KHYC Race Office within four (4) hours of the boat's finish time, or by 1600 hours on Saturday, July 27, 2024, whichever is earlier. The cruising class may submit the Cruising Class Engine Log by hand delivering or via emailed picture to: jerryvellutini@gmail.com.
- 27.2 [DP] A Cruising Class boat failing to correctly complete and file her Cruising Class Engine Log, may be protested by the Race Committee and may be penalized up to a Disqualification (DSQ) by the Protest Committee following a hearing.
- 27.3 ENGINE USE IMPACT ON FINAL CORRECTED TIME - An adjustment equal to (IN-GEAR-TIME X 0.40 X Square Root (LWL)) will be added to the Corrected Time to produce a Final Corrected Time.

28. CRUISING CLASS PERMITTED EQUIPMENT

- 28.1 Whisker Poles may be used and are limited in length to 1.4 time the 'J' measurement.
- 28.2 Double headsails, double head rigs, and multi-mast vessels are allowed.
- 28.3 Power winches are allowed. This changes rule 52.

29. OTHER CRUISING CLASS REQUIREMENTS AND INFORMATION

- 29.1 Competitors in the Cruising Classes are reminded that under the International Regulations for Preventing Collisions at Sea (IRPCAS), they are required to exhibit a white masthead light aloft when under power.
- 29.2 [DP] Rig bands for the 'P' and 'E' measurement are not required. However, the mainsail must measure to the reported dimensions.
- 29.3 Sail dimensions are not required to be marked on the sails.
- 29.4 [DP] Cruising Class boats finishing under power (motoring) shall have the mainsail raised. A boat failing to have the mainsail raised may be protested by the Race Committee and may be penalized by having sixty (60) minutes added to her elapsed time by the Protest Committee following a hearing.
- 29.5 Cruising Class boats are competing against their class only and are not eligible for winning the overall competition.

30. CRUISING CLASS PHRF NON-SPINNAKER OFFSET

The PHRF Non-Spinnaker Offset shall be added only to boats racing Non-Spinnaker in the Cruising Class. The Race Rating for a boat racing Non-Spinnaker in the Cruising Class shall be the PHRF Base OWC Rating + PHRF Non-Spinnaker Offset.

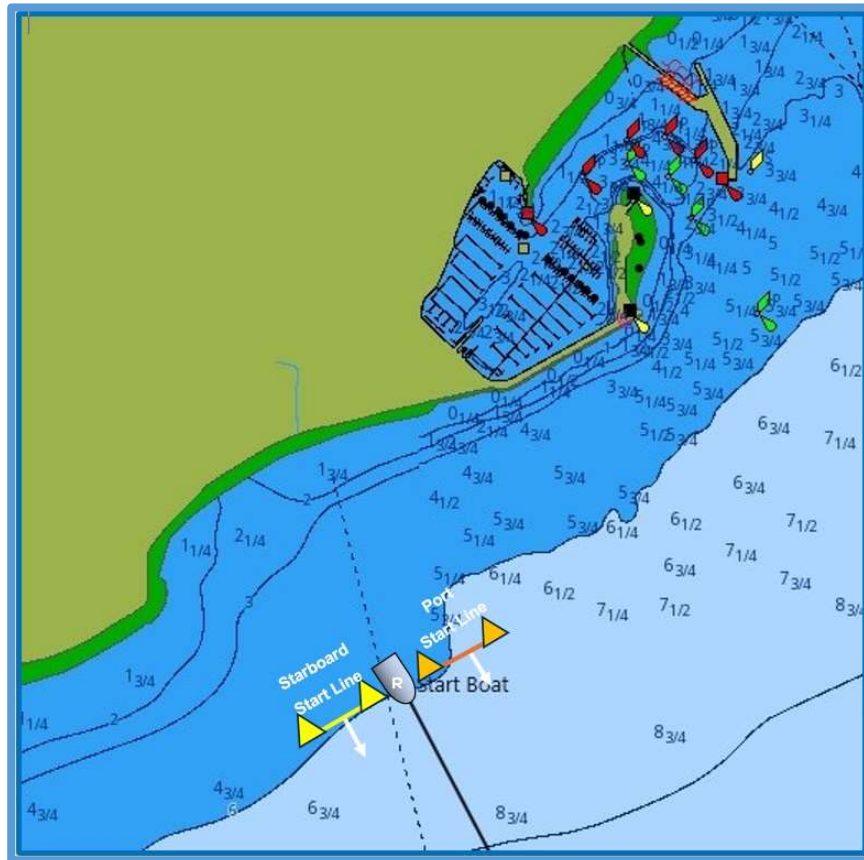
31. INSURANCE

[NP][DP] Each participating boat shall be insured with valid combined single limit watercraft liability insurance in and amount not less than \$300,000.

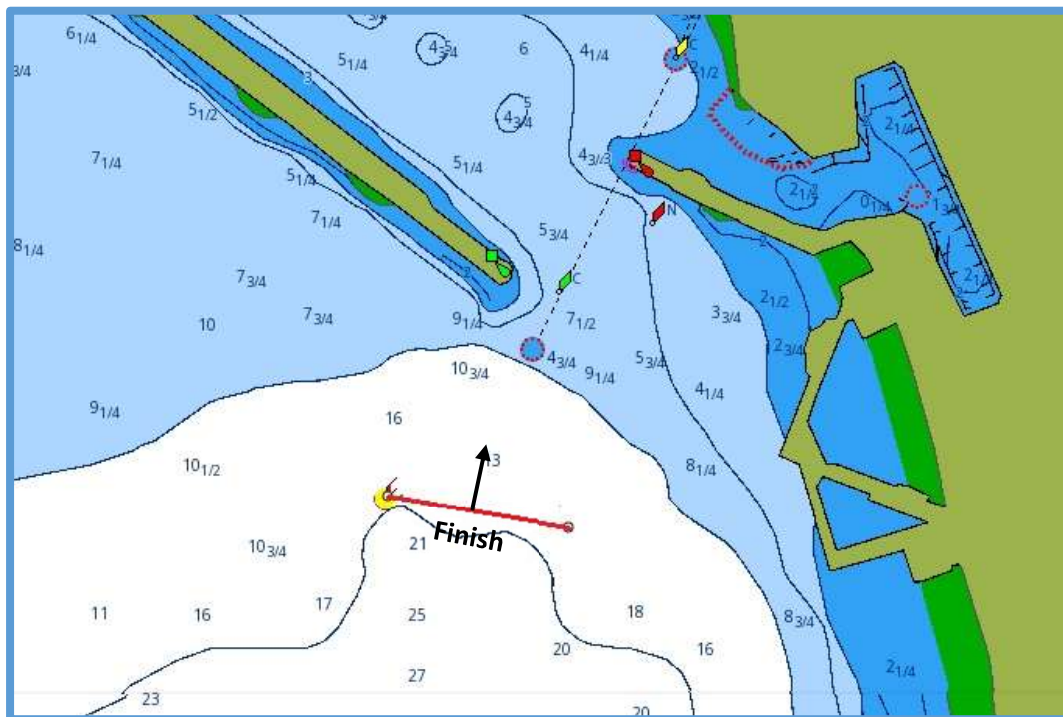
32. RISK STATEMENT & DISCLAIMER OF LIABILITY

RRS 3 states: 'The responsibility for a boat's decision to participate in a race or to continue to race is hers alone.' By participating in this event each competitor agrees and acknowledges that sailing is a potentially dangerous activity with inherent risks. These risks include strong winds and rough seas, sudden changes in weather, failure of equipment, boat handling errors, poor seamanship by other boats, loss of balance on an unstable platform and fatigue resulting in increased risk of injury. **Inherent in the sport of sailing is the risk of permanent, catastrophic injury or death by drowning, trauma, hypothermia or other causes.** The Organizing Authority will not accept liability for damage or personal injury or death sustained in conjunction with, prior to, during, or after this Race.

Attachment C – Start Area Detail

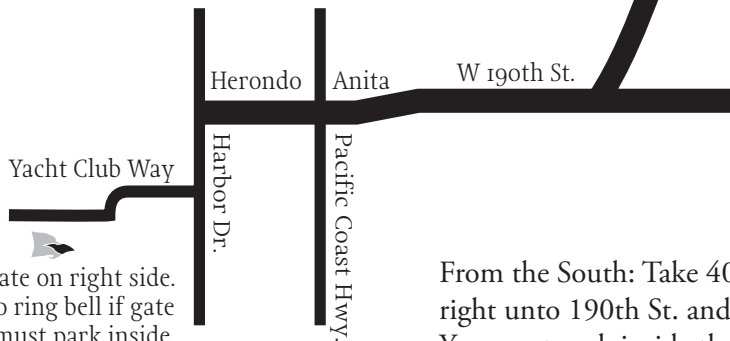
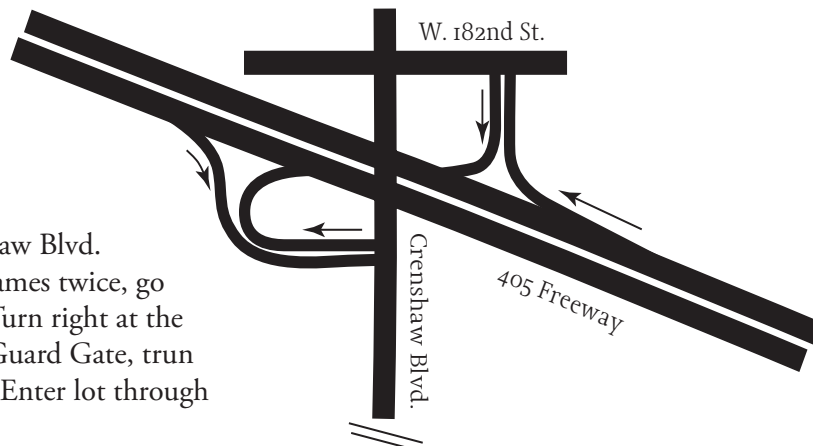


Attachment D – Finish Detail



King Harbor Yacht Club

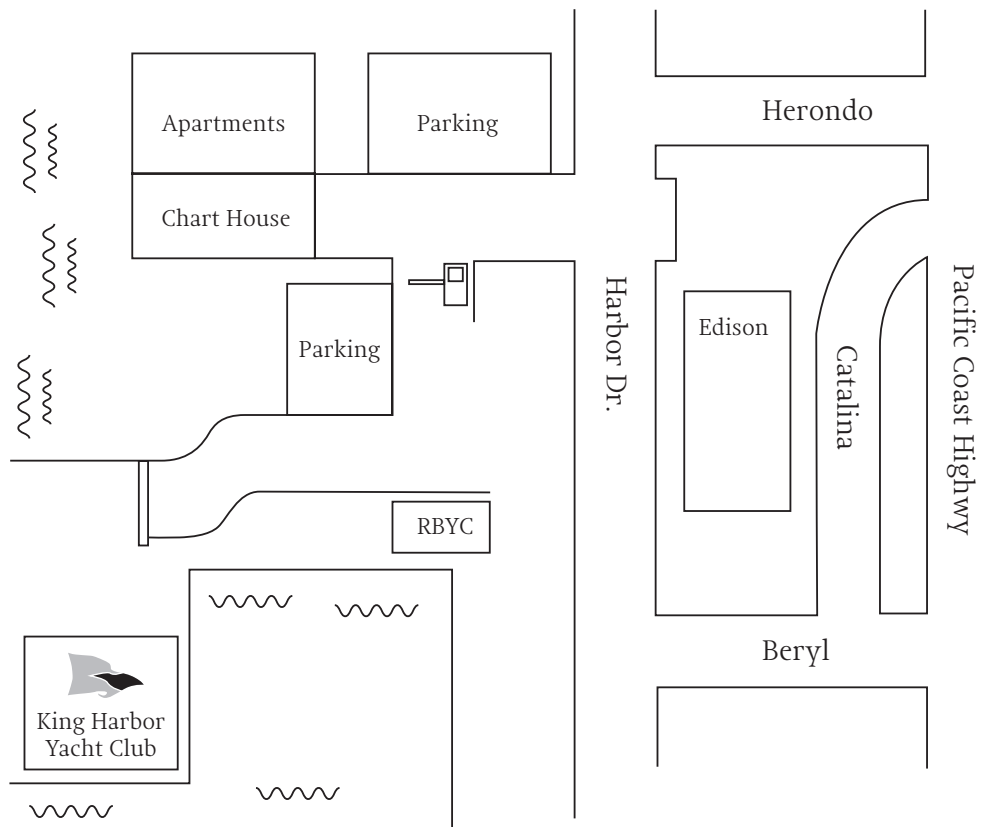
From the North: Take 405 South, exit Crenshaw Blvd. Make a right onto 190th St. (street changes names twice, go straight.) Dead-end at Harbor Dr., turn left. Turn right at the first street, Yacht Club Way. Go through left Guard Gate, turn right and follow the winding road to the end. Enter lot through gate on left. Club is on your left.



Entrance gate on right side.
Press button to ring bell if gate is not open. You must park inside.

From the South: Take 405 North, exit Crenshaw Blvd. Make a right onto 190th St. and follow from the North directions. You must park inside the KHYC lot. Distance is approximately five miles from the freeway.

Please park inside the KHYC parking lot to avoid being ticketed.
Carpooling is greatly appreciated.



exceptional craftsmanship



unparalleled convenience

harbormarineworks.com

2024
SB to KH
Race



PHOTO BY JOY SAILING



SPEED
DOWNWIND



Pass your competition. The Ullman Sails Red Line Spinnaker Series offers custom downwind racing sails that maximize your boat speed across the entire wind range. Contact your local loft to optimize your downwind inventory before your next race.

ULLMAN SAILS NEWPORT BEACH

Bruce Cooper | 714.432.1860 | ullman@ullmansails.com

ULLMAN SAILS VENTURA

Gary Swenson | 805.644.9579 | ullmanventura1@att.net

ULLMAN SAILS SAN FRANCISCO & MONTEREY BAY

David Hodges | 831.454.0868 | dhodges@ullmansails.com



BOATING IS WHAT CONNECTS US.

Your Go-To California
Yacht Brokerage

OUR SERVICES

- ✓ Unsurpassed Experience
- ✓ Marketing Expertise
- ✓ Listing Distribution
- ✓ Local Knowledge
- ✓ Digital Tools

THE SEACOAST WAY

As we celebrate 24 years of supporting local boating communities, Seacoast continues to expand with multiple offices and a growing team of agents who will go above & beyond to help clients with their next venture.

CONTACT US!

sales@seacoastyachts.com



SEACOAST
Y A C H T S

WWW.SEACOASTYACHTS.COM

